

State of Wyoming Corner Record

(In compliance with the CORNER PERPETUATION AND FILING ACT, Wyoming Statutes, 2013 Section 33-29-901 through 33-29-910, and the Rules and Regulations of the Board of Professional Engineers and Professional Land Surveyors)

Reverse side of this form may be used if more space is needed.

Record of original survey and citation of source of historical information (if corner is lost or obliterated). Description of corner monumentation evidence found and/or monument and accessories established to perpetuate the location of this corner. Sketch of relative location of monument, accessories, and reference points with course and distance to adjacent corner(s) (if determined in this survey). Method and rationale for reestablishment of lost or obliterated corner.

DETERMINED CORNER TO BE LOST – METHOD FOR REESTABLISHMENT: Double Proportionate Measurement.

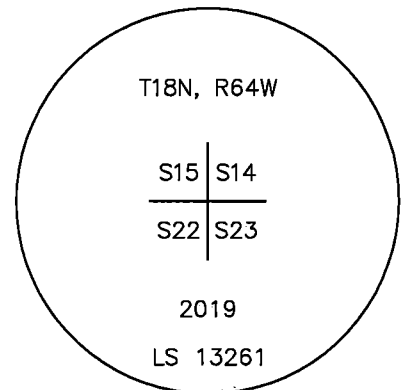
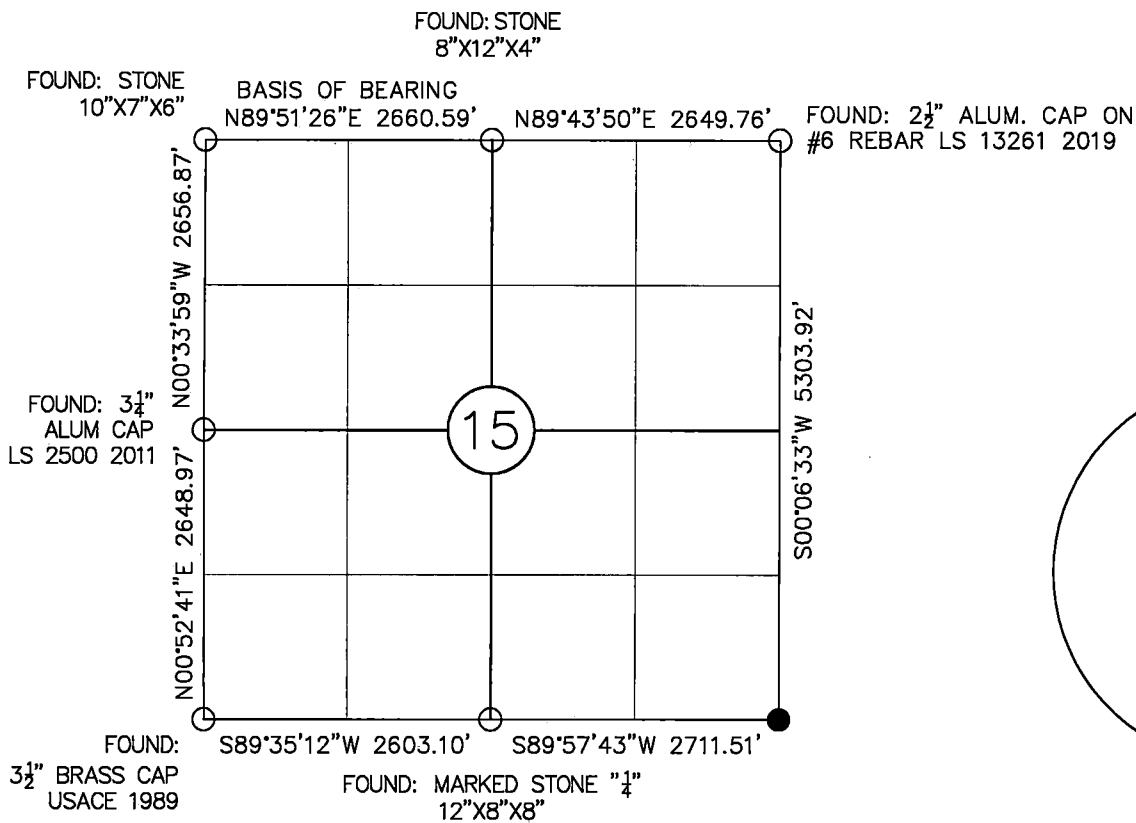
ORIGINAL GLO RECORD: Sandstone 16"x10"x6"; Notches: three (3) south, two (2) east

MONUMENT FOUND: None

MONUMENT SET: 2½" Aluminum Cap on #6 Rebar four (4) inches above ground, stacked stones around monument for corner common to Sections 14, 15, 22 and 23.

All dimensions are in US Survey Feet

Monument location



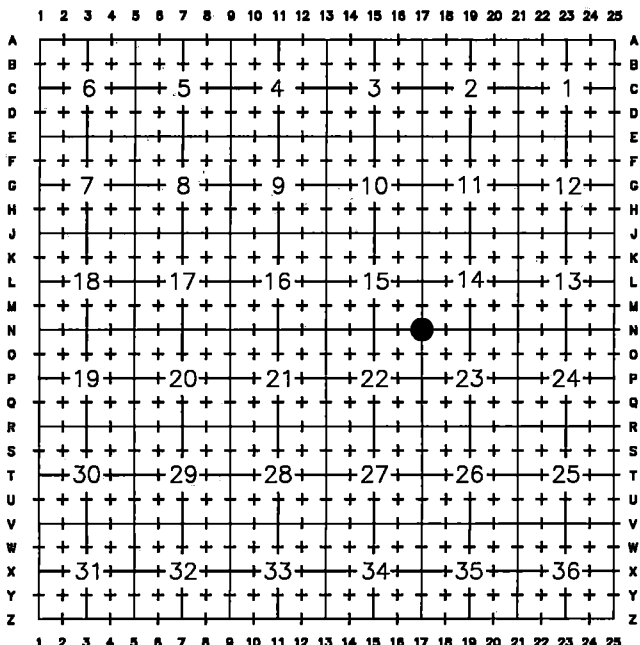
Monument Inscription

Date of Field Work: 09/11/2019

Office Reference: 1903-005 #1008

See Reverse Side for References

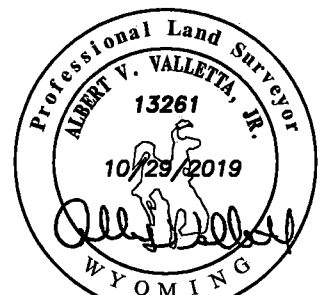
Cross Index Plat



Firm/Agency, Address
DALEY LAND SURVEYING, INC.
17011 LINCOLN AVE., #361
PARKER, CO 80134
(303) 953-9841

This corner record was prepared by me or under my direction and supervision.

SEAL & SIGNATURE



FOR AND ON BEHALF OF
DALEY LAND SURVEYING INC.,
ALBERT V. VALLETTA, JR., PLS 13261



REC'D #: 765651
RECORDED 11/13/2019 AT 9:38 AM BK# 2647 PG# 123
Debra K. Lee, CLERK OF LARAMIE COUNTY, WY PAGE 1 OF 2

Corner Name Southeast Corner Section 15, T 18 N, R 64 W, 6th P.M.

Cross-Index No.: N-17

County: LARAMIE

State of Wyoming Corner Record

(In compliance with the CORNER PERPETUATION AND FILING ACT, Wyoming Statutes, 2013 Section 33-29-901 through 33-29-910, and the Rules and Regulations of the Board of Professional Engineers and Professional Land Surveyors)

Reverse side of this form may be used if more space is needed.

Record of original survey and citation of source of historical information (if corner is lost or obliterated). Description of corner monumentation evidence found and/or monument and accessories established to perpetuate the location of this corner. Sketch of relative location of monument, accessories, and reference points with course and distance to adjacent corner(s) (if determined in this survey). Method and rationale for reestablishment of lost or obliterated corner.

DETERMINED CORNER TO BE LOST – METHOD FOR REESTABLISHMENT: Double Proportionate Measurement.

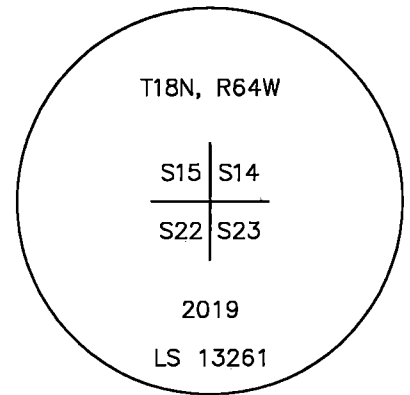
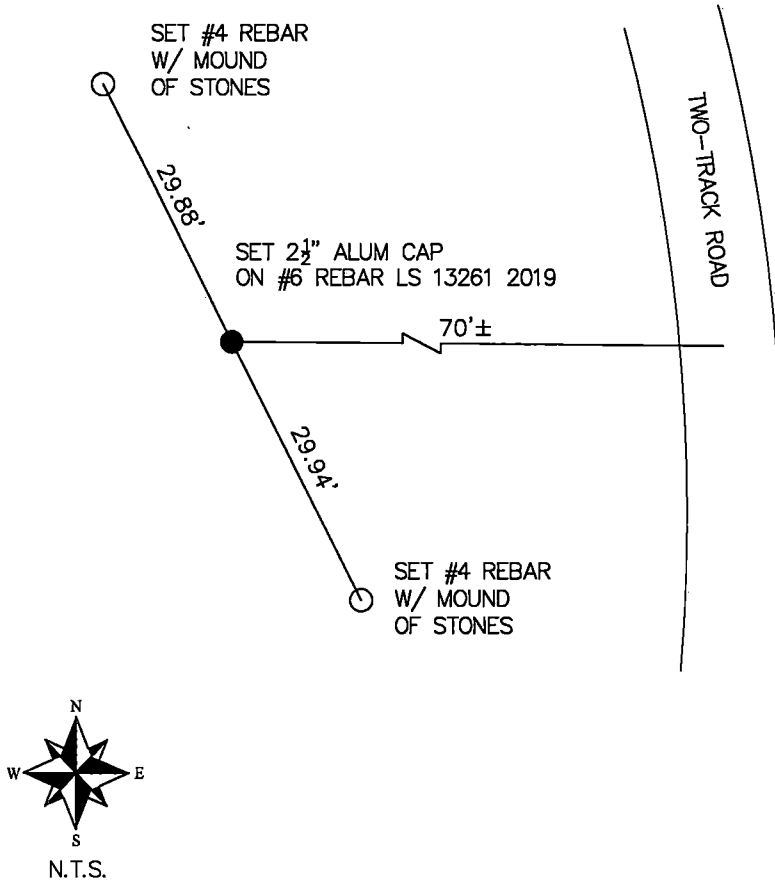
ORIGINAL GLO RECORD: Sandstone 16"x10"x6"; Notches: three (3) south, two (2) east

MONUMENT FOUND: None

MONUMENT SET: 2½" Aluminum Cap on #6 Rebar four (4) inches above ground, stacked stones around monument for corner common to Sections 14, 15, 22 and 23.

REFERENCES: Set #4 Rebar as shown below.

All dimensions are in US Survey Feet

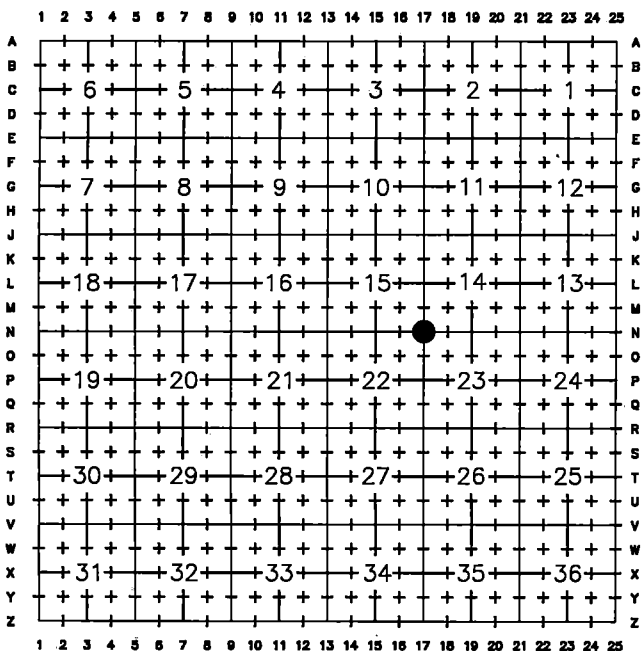


Monument Inscription

Date of Field Work: 09/11/2019

Office Reference: 1903-005 #1008

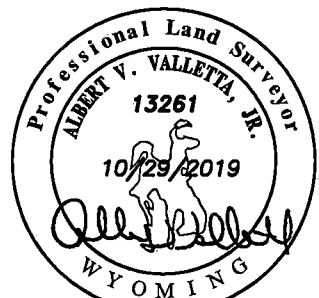
Cross Index Plat



Firm/Agency, Address
 DALEY LAND SURVEYING, INC.
 17011 LINCOLN AVE., #361
 PARKER, CO 80134
 (303) 953-9841

This corner record was prepared by me or under my direction and supervision.

SEAL & SIGNATURE



FOR AND ON BEHALF OF
 DALEY LAND SURVEYING INC.,
 ALBERT V. VALLETTA, JR., PLS 13261



RECP #: 765651

RECORDED 11/13/2019 AT 9:38 AM BK# 2647 PG# 124
 Debra K. Lee, CLERK OF LARAMIE COUNTY, WY PAGE 2 OF 2

Corner Name Southeast Corner Section 15, T 18 N, R 64 W, 6th P.M.

Cross-Index No.: N-17

County: LARAMIE

WBPEPLS/PLSW: March 1994; PLSW January 1998, January 2019